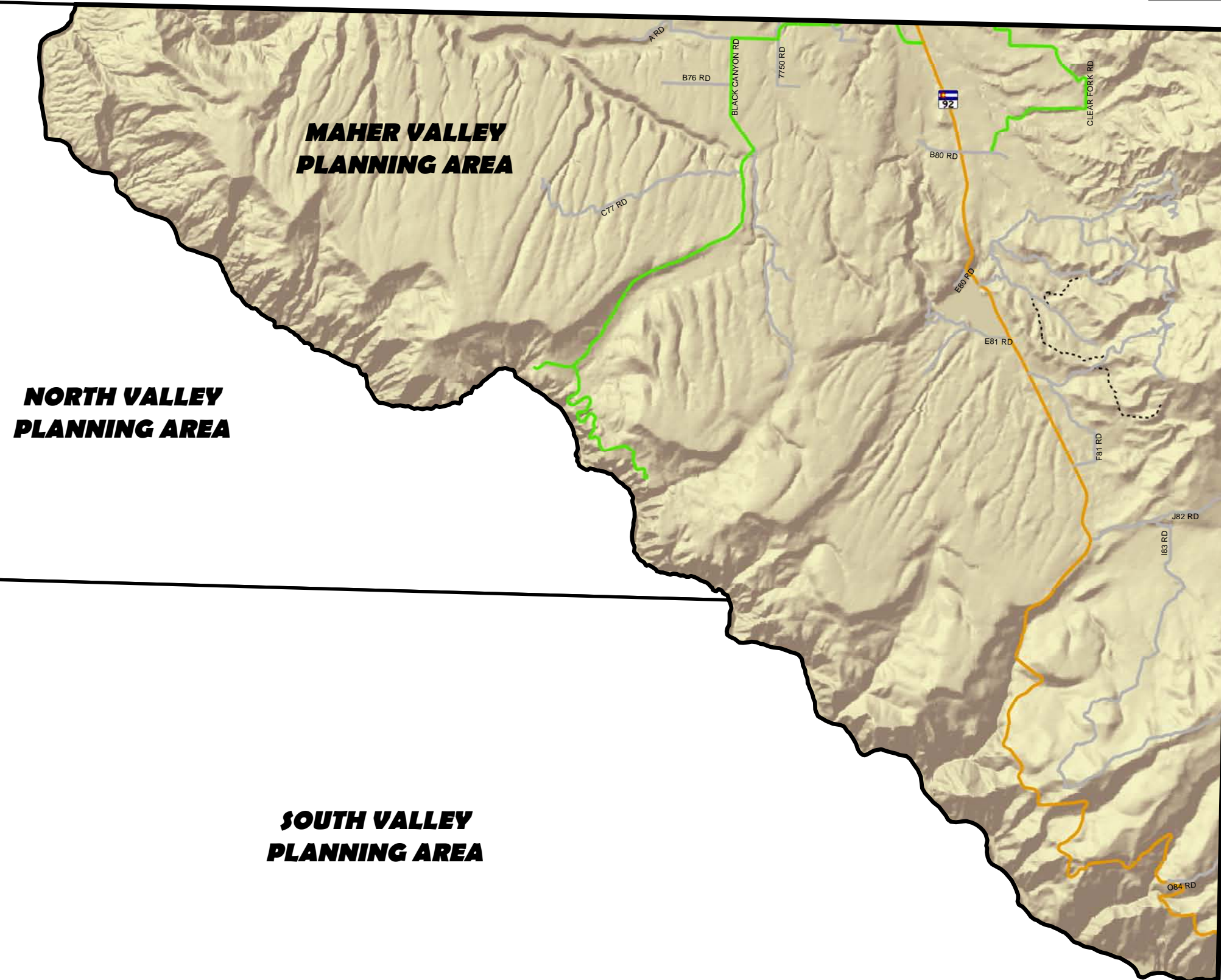
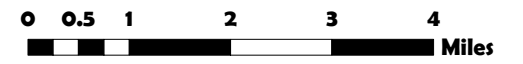


Maher Transportation Detail Montrose County, CO Appendix E (3)



Due to topography, precise alignment of the eastern arterial route will be determined upon development of the area. It is expected that deviations to this route, some of which may be significant, will be made.

- Legend**
- Major Arterial
 - Minor Arterial
 - Collector
 - Local Road/Street
 - Rural Road
 - - - - Primitive
 - East Arterial
 - Incorporated Areas



Stateplane Coordinate System
Colorado South Zone
Datum: NAD27