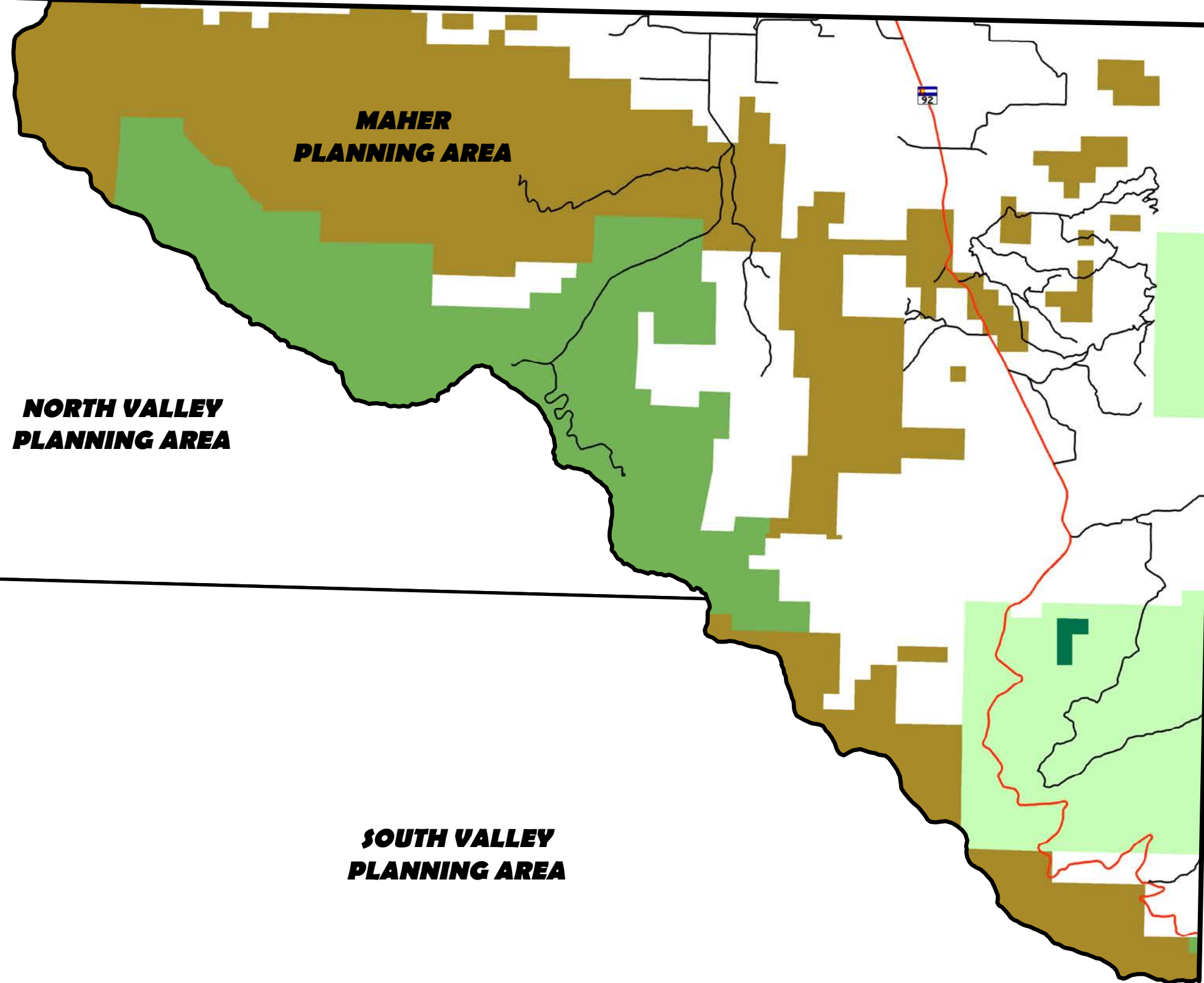


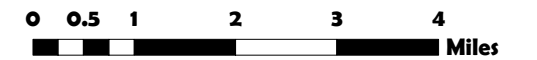
Maher Projected Land Use Montrose County, CO Appendix C (3)

With the exception of the Forest Service InHoldings Overlay, no projected land use has been shown for the Maher Planning Area. Development in this area will continue to be subject to the requirements of the Montrose County Subdivision Regulations and Montrose County Zoning Resolution.



Legend Projected Land Use

- | | | |
|-----------------------------------|------------|--------------------------------|
| Forest Service InHoldings Overlay | BLM | Agricultural |
| Commercial Nodes | NPS | Agricultural/Rural Residential |
| Railroad ROW | USFS | Suburban Residential |
| Airport Buffer Overlay | CDOW | Commercial/Industrial |
| Roads | WILDERNESS | |
| Highway | | |
| Airport Property | | |
| City Boundaries | | |



Stateplane Coordinate System
Colorado South Zone
Datum: NAD27